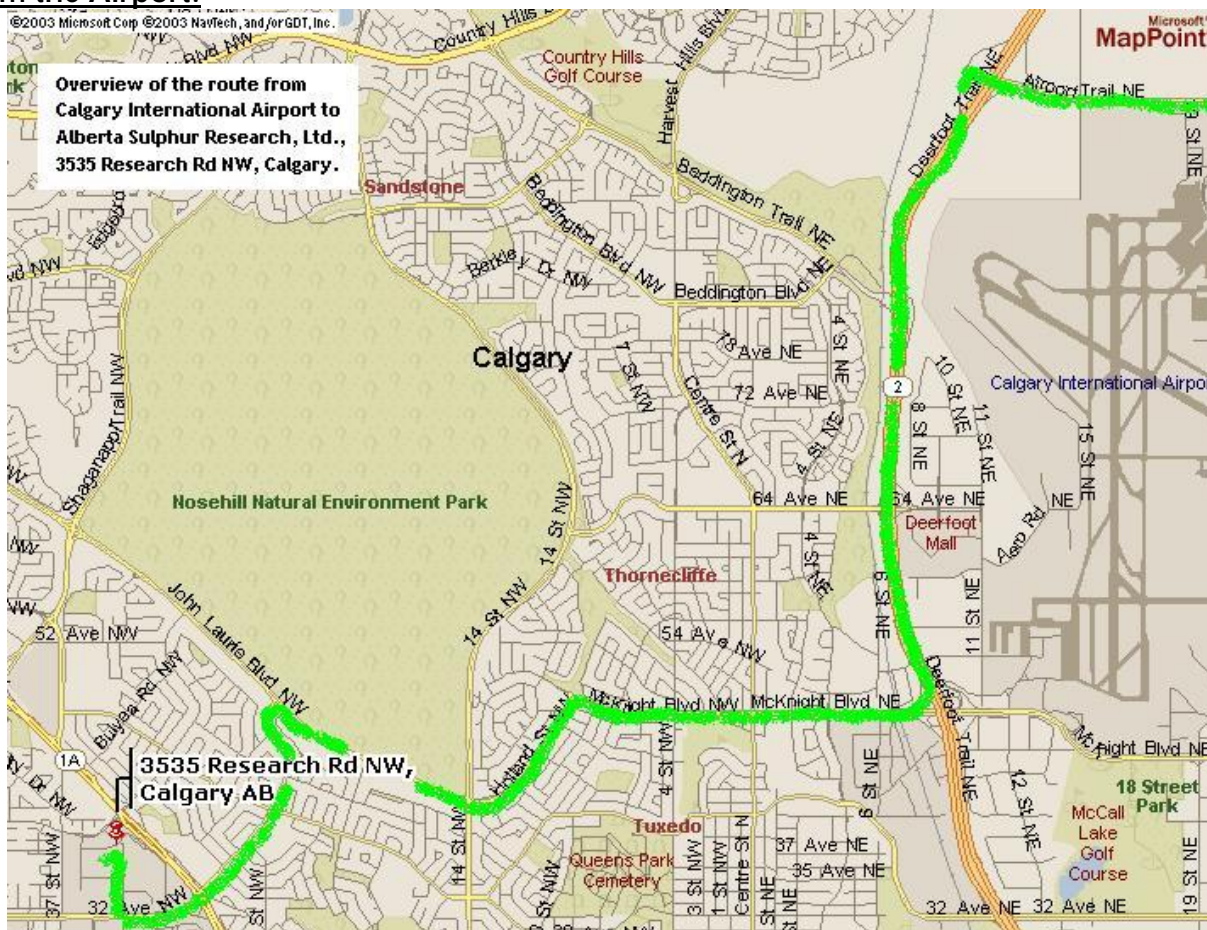




ALBERTA SULPHUR RESEARCH LTD.
Center for Applied Catalysis and Industrial Sulfur Chemistry
University Research Centre, #6 - 3535 Research Road N.W.
Calgary, Alberta, Canada T2L 2K8
Country Code: 001 Office: 403 - 220 - 5346 Fax: 403 - 284 - 2054
E-mail: asrinfo@ucalgary.ca
Website: www.chem.ucalgary.ca/asr/

Travel Directions to the new ASRL facility at 3535 Research Road NW, Calgary From the Airport:



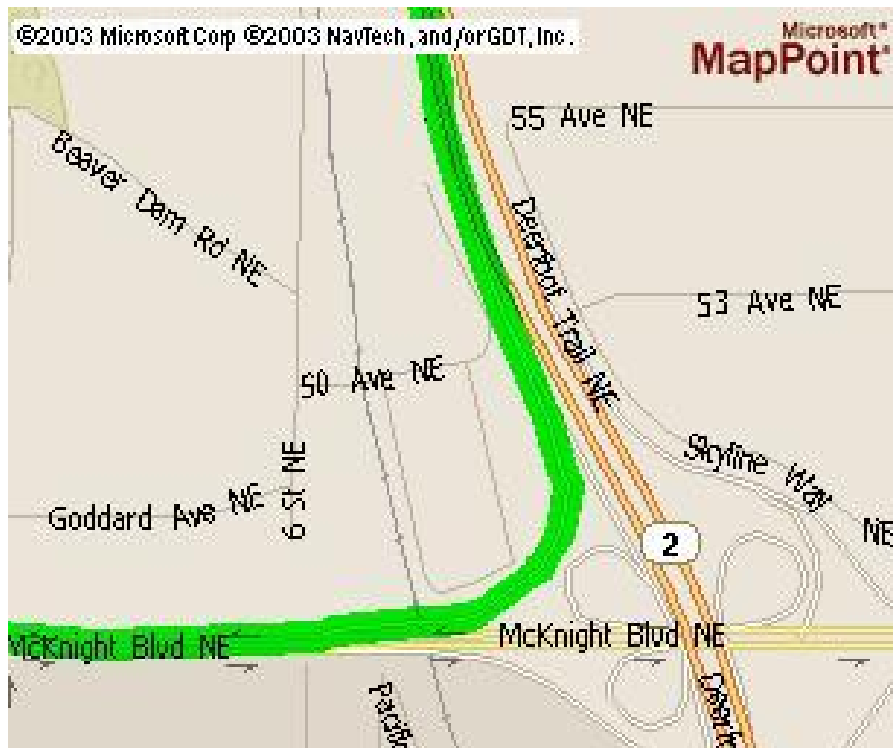
1. Exit the airport terminal building, keep left on Airport Road.
2. Turn left at Barlow Trail (first traffic light).
3. Keep left on Barlow Trail, turn left at Airport Trail (first traffic light).
4. Keep left on Airport Trail, turn left for Deerfoot Trail Southbound after the underpass.

ASRL is registered as a not-for-profit Company in the Province of Alberta and is located within the Department of Chemistry, The University of Calgary



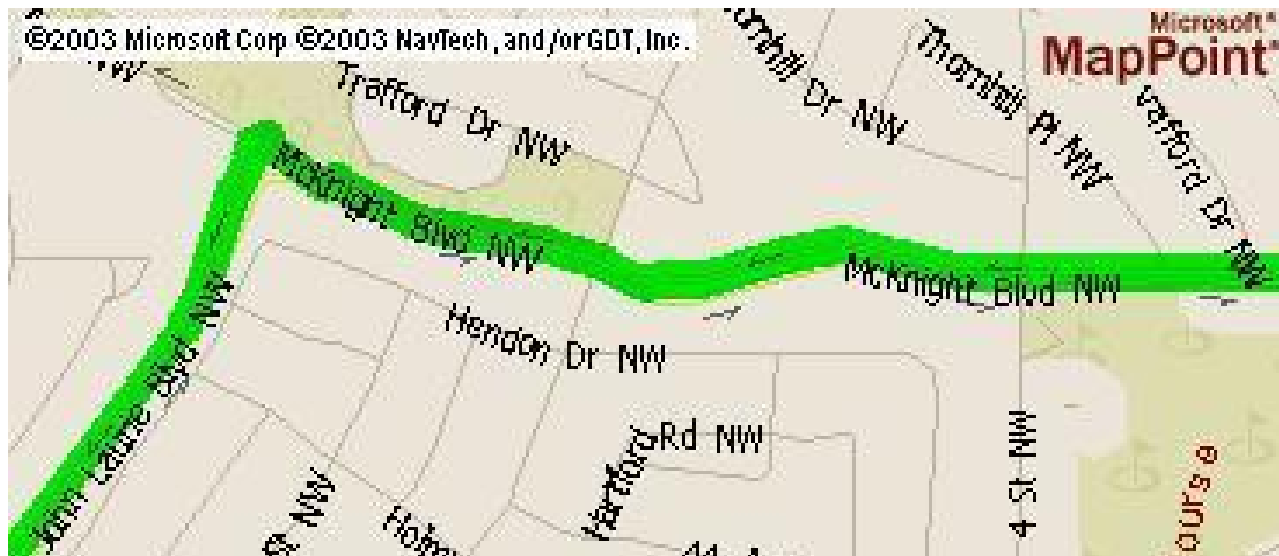
MAP 1

5. Drive south on Deerfoot Trail.
6. Exit at McKnight Blvd. Use the first right for McKnight Blvd Westbound.



MAP 2

7. Continue driving west on McKnight Blvd.
8. On the uphill section past 4th Street NW, turn left at John Laurie Blvd.



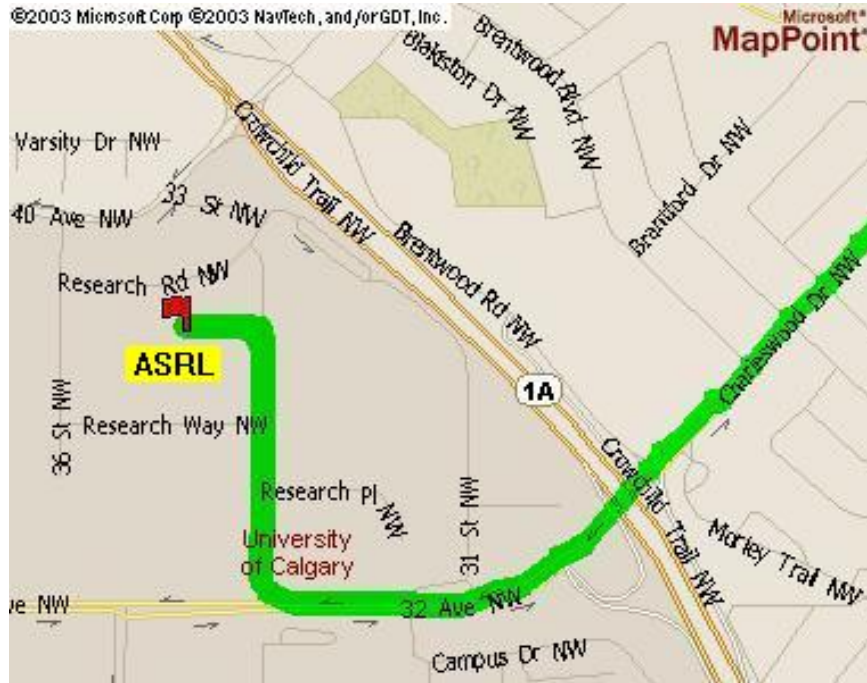
MAP 3

9. Drive westbound on John Laurie Blvd.
10. Turn left at the 2nd exit on your left, Charleswood Drive (the first exit on your left will be 19th Street NW).
11. Drive along Charleswood Drive. Please be aware of the **Playground Zone** (marked in red).



MAP 4

12. Continue along Charleswood Drive, which becomes 32nd Avenue NW after passing over Crowchild Trail. The University of Calgary campus will be on your left. Past the 2nd set of traffic lights after passing over Crowchild Trail, **turn right at 33rd Street NW**.
13. Drive along 33rd Street NW past the first intersection on the left. A **white building with red trim** will be on the left side. Take the entrance into the parking lot.



MAP 5

ASRL is registered as a not-for-profit Company in the Province of Alberta and is located within the Department of Chemistry, The University of Calgary