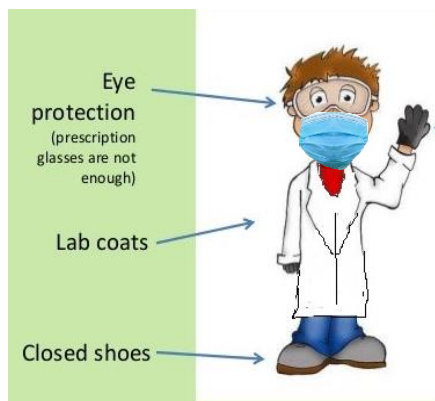


Undergraduate Laboratory Dress Code and Laboratory Policies

- Impairment due to alcohol or drugs will not be tolerated. Those who are impaired will not be allowed to work in the lab.
- **No** food or drink is allowed in the labs.
- Students are not allowed in the lab unless a TA or instructor is present.



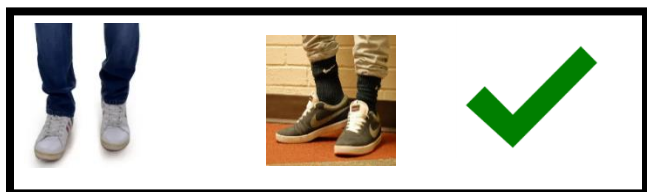
- **Masks are required** at all times in the laboratory.
- All students must provide their own lab coat and pair of safety glasses.
- Lab coats and safety glasses must be **put on as soon as you enter the lab** and worn in the lab at all times unless instructed otherwise by the lab coordinator.
- Lab coats and gloves must be **removed** when leaving the lab.



- **No** skin with the exception of hands, neck and face can be exposed, i.e.,

- **No** rolled up or ripped jeans

- **No** exposed ankles, legs or feet



- **No** nylons/stocking or mesh panels on leggings or pants

- **No** sandals or flip-flops

- Hair that is longer than shoulder length must be tied up.



- Hats if worn, must not obstruct vision or hearing.



- **No** electronic devices with the exception of a calculator is allowed.
i.e., no cell phones, no laptops, no tablets, no audio/video or no smart devices of any kind.

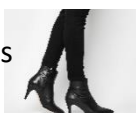


- **No** unauthorized experiments.



- Contact lenses are not recommended to be worn when performing experiments.

- Footwear with unstable heels (e.g., high heels) are not recommended to be worn in the lab.



Students who fail to adhere to the Laboratory Dress Code and Laboratory Safety Policies will not be allowed to work in the laboratory.